

A long-exposure photograph of a highway at dusk or dawn. The image shows multiple lanes of a road curving into the distance. Light trails from cars are visible, with a prominent orange and yellow trail on the left side of the road. The sky is a gradient of blue and white, with a bright horizon line. The overall mood is serene and dynamic.

# ADAMS AND REESE





B. Jeffrey Brooks  
Executive Committee Chair

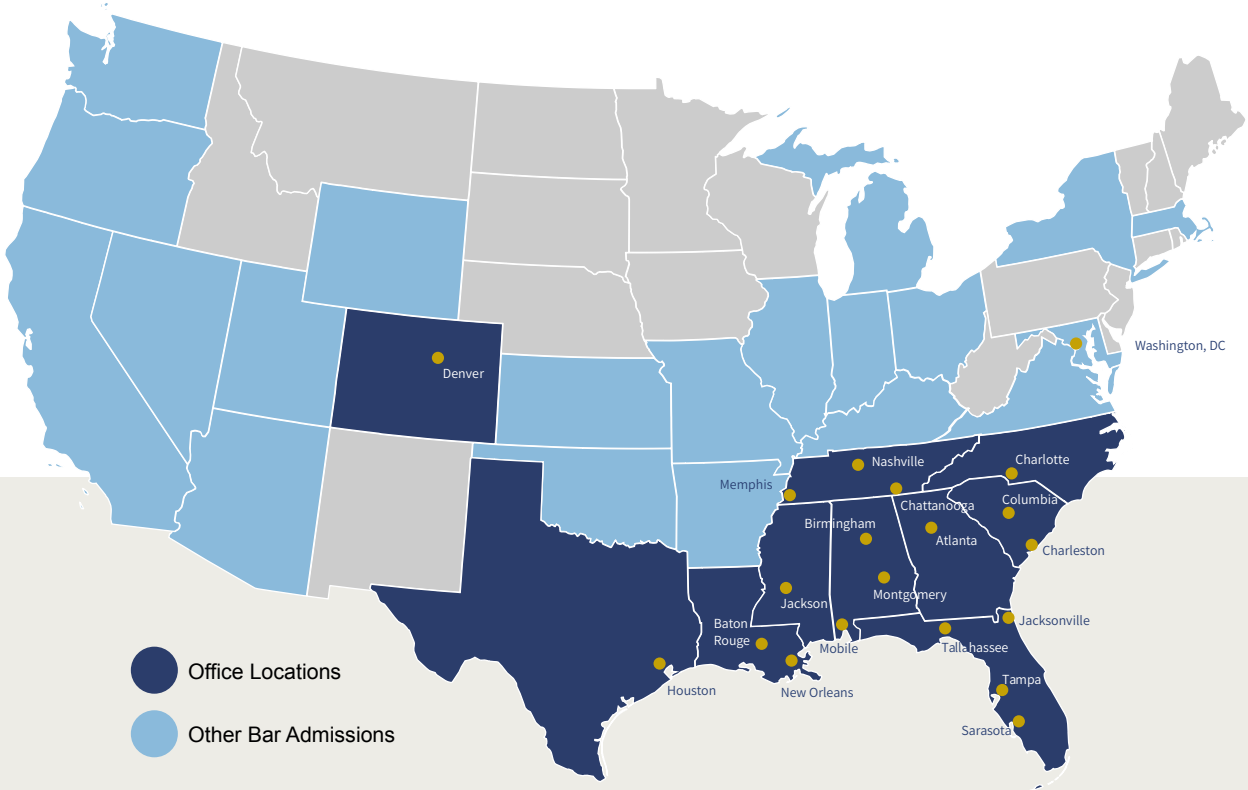
“For us, it’s not about simply reacting to legal currents. We try to chart the course by deeply understanding our client’s industries across the globe. Our team’s fierce resolve and collaborative culture drives impactful results at Adams and Reese.”

“At Adams and Reese, we partner with clients as trusted advisors on their transactions and work as zealous advocates when disputes arise.”



Gif Thornton  
Managing Partner

# ■ Regional Footprint, Global Reach



Founded in 1951, Adams and Reese is a full-service, multidisciplinary Am Law 200 and NLJ 500 law firm with over 300 attorneys and advisors. With 20 offices across 10 states, our legal team represents businesses nationally in more than 50 industries, with particular strengths in the areas of Construction, Intellectual Property, Alcohol and Hospitality, Commercial Litigation, Government Relations, Real Estate, and Financial Services.

We represent clients globally in Intellectual Property, Insurance, and Global Trade, Transportation and Logistics.

**300+**  
Attorneys and Advisors

**20**  
Offices

**50+**  
Practice Areas

**4**  
Practice Groups



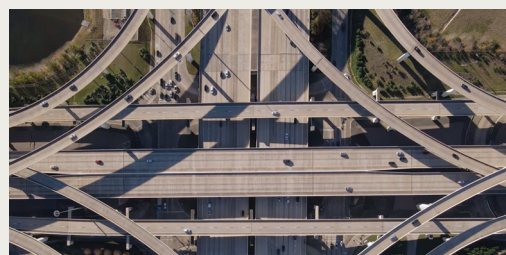
ALABAMA | COLORADO | FLORIDA | GEORGIA | LOUISIANA | MISSISSIPPI  
NORTH CAROLINA | SOUTH CAROLINA | TENNESSEE | TEXAS | WASHINGTON, DC



## ■ Practice Areas and Industries



Litigation



Intersection of Business and Government



Corporate Services



Financial Services

### Providing solutions in over 50 practice areas.

Alcohol and Hospitality | Aviation | Commercial Restructuring and Bankruptcy | Crisis Preparedness and Response  
Energy / Oil & Gas | Commercial Lending | Creditors' Rights / Special Assets / Workouts | Estate, Trust and Fiduciary Litigation  
Financial Services Litigation Financial Services Regulatory / Operations | Global Trade, Transportation and Logistics  
Global Intellectual Property | Labor and Employment | Maritime | Privacy, Cybersecurity and Data Management | Construction  
Education | Environmental Forestry | Insurance | Government Relations | Appellate | Class Action / Complex Litigation  
Commercial Litigation | Products Liability | Toxic Tort | Middle Market Mergers and Acquisitions | Real Estate  
Economic Development | Public Finance | Tax | Utilities and Telecommunications | Workplace Safety and OSHA



**163**   
Attorneys Selected  
"Best Lawyers" for 2023  
(Recognized since 1983)

**149**   
Practice Area  
Metro Rankings  
"Best Law Firms" 2023  
(Recognized since 2008)

**145**   
"Super Lawyers  
and Rising Stars"  
(Recognized since 2010)

**29**   
Lawyers Ranked  
by Chambers 2023  
(Recognized since 2006)



## ■ Diversity, Equity, and Inclusion

### What Our Clients Expect

We invest in our people so that all individuals can truly succeed. Doing so makes us a better firm and better equipped to meet the needs of today's clients.

General counsel and legal executives recognize that outside attorneys who reflect diversity of their own organizations are more seamlessly integrated into teams that tackle the variety of legal and business tasks and challenges they face. At Adams and Reese, we not only applaud the commitment of these GCs and others, but we are also ready to meet the challenge because it is fully aligned with our aspirations.

“Embracing diverse perspectives strengthens our understanding of clients and their goals, fuels innovative solutions, and drives our pursuit of outstanding results. We mirror the values of our clients by investing in a truly diverse environment.”

- Clarence Wilbon, DEI Chair, Former Executive Committee Chair



## ■ Our commitment to serving others defines who we are as a firm.

Founded in 1988 by Adams and Reese attorney Mark Surprenant, the law firm's HUGS (Hope, Understanding, Giving, and Support) program embodies the firm's emphasis on giving back, while CA&RE (Caring Adams and Reese Employees) promotes pro bono opportunities for Adams and Reese attorneys to work for clients and nonprofit organizations who cannot afford representation. Through HUGS, attorneys and staff across the firm's 20 offices donate time to more than 100 charitable organizations in various philanthropic projects.

### Pro Bono

Caring Adams and Reese Employees (CA&RE) allows every lawyer to provide pro bono work for clients and nonprofit organizations who cannot afford to pay for an attorney. Adams and Reese is so committed to pro bono work, that the firm requires attorneys to dedicate at least 20 hours of pro bono work to resolve difficult cases for those in need within our communities.



Top 200 "Pro Bono Firms" by *American Lawyer*  
10 city/state honors since 2001

# ADAMS AND REESE

[www.adamsandreesee.com](http://www.adamsandreesee.com)

## CONNECT WITH US



X  
[@adamsandreesee](#)



FACEBOOK  
[@adamsandreesee](#)



LINKEDIN  
[@adams-and-reese-llp](#)



YOUTUBE  
[@adamsandreesee](#)